


9 ne peuvent être utilisées ou développées, à des fins que n'ils soient sans son accord écrit.  
 Seuls nous engageant pour exécution les plans et schémas remis après enregistrement de la commande.  
 Les appareils représentés sur ce schéma sont en position ouvert déarmés - débrosés - toutes sources coupées.

9 and may neither be used nor developed without its prior written consent.  
 Only drawings and diagrams submitted after order booking are binding for execution. All devices shown in this  
 diagram are in acherbe position, drawn out, with operating mechanisms discharged and all power sources ope.

Rev.	Date	Modification	Drawn	Visa	Checked	Visa	Approved	Visa	Archive
C0	22.08.06	Updated after meeting	BLANCHER		DANIEL				
B0	09.08.06	Bays fitting	DANIEL		BLANCHER				
A0	19.07.06	First issue	IACONO		BLANCHER				

SINGLE LINE DIAGRAM SF6 GAS COMPARTMENTS		SCA OBBOLA TH7m – 145kV			
echelle / Scale 1:1					
Unité / Division BEA					
Code	Projet / Project	No Document / File No	Variante	Rev.	Folio :
	100558	51219070	U0	C0	001



1 2 3 4 5 6 7 8 9 10

A

B

C

D

and may neither be used nor disseminated without its prior written consent.  
 Only drawings and diagrams permitted after order booking are binding for execution. All devices shown in this  
 diagram are in abierto position, drawn out, with operating mechanisms discharged and all power sources off.

et ne peuvent être utilisées ou divulguées à des tiers quelle qu'ils soient sans son accord écrit.  
 Seuls nous engageons pour exécution les plans et schémas remis après enregistrement de la commande.  
 Les appareils représentés sur ce schéma sont en position ouvert désarmés - débrochés - toutes sources coupées.

LEGEND	
-Q0	COMBINED CIRCUIT BREAKER / DISCONNECTOR
Q10	MOTOR OPERATED DISCONNECTOR
Q80 HS	MOTOR OPERATED HIGH SPEED EARTHING SWITCH
-Q90	2 POSITION COMBINED MOTOR OPERATED DISCONNECTOR & EARTHING SWITCH
-Q15	EARTHING SWITCH
-T10  P1	CURRENT TRANSFORMER
	CABLES BOX
	BUSHING
-T30G	VOLTAGE TRANSFORMER GENERATOR
-T30	VOLTAGE TRANSFORMER

Auxiliary voltage			
	Motor	Auxiliary	Heating
CIRCUIT BREAKER	110 VDC	110 VDC	230 VAC 50HZ
DISCONNECTOR	110 VDC	110 VDC	230 VAC 50Hz

A

B

C

D

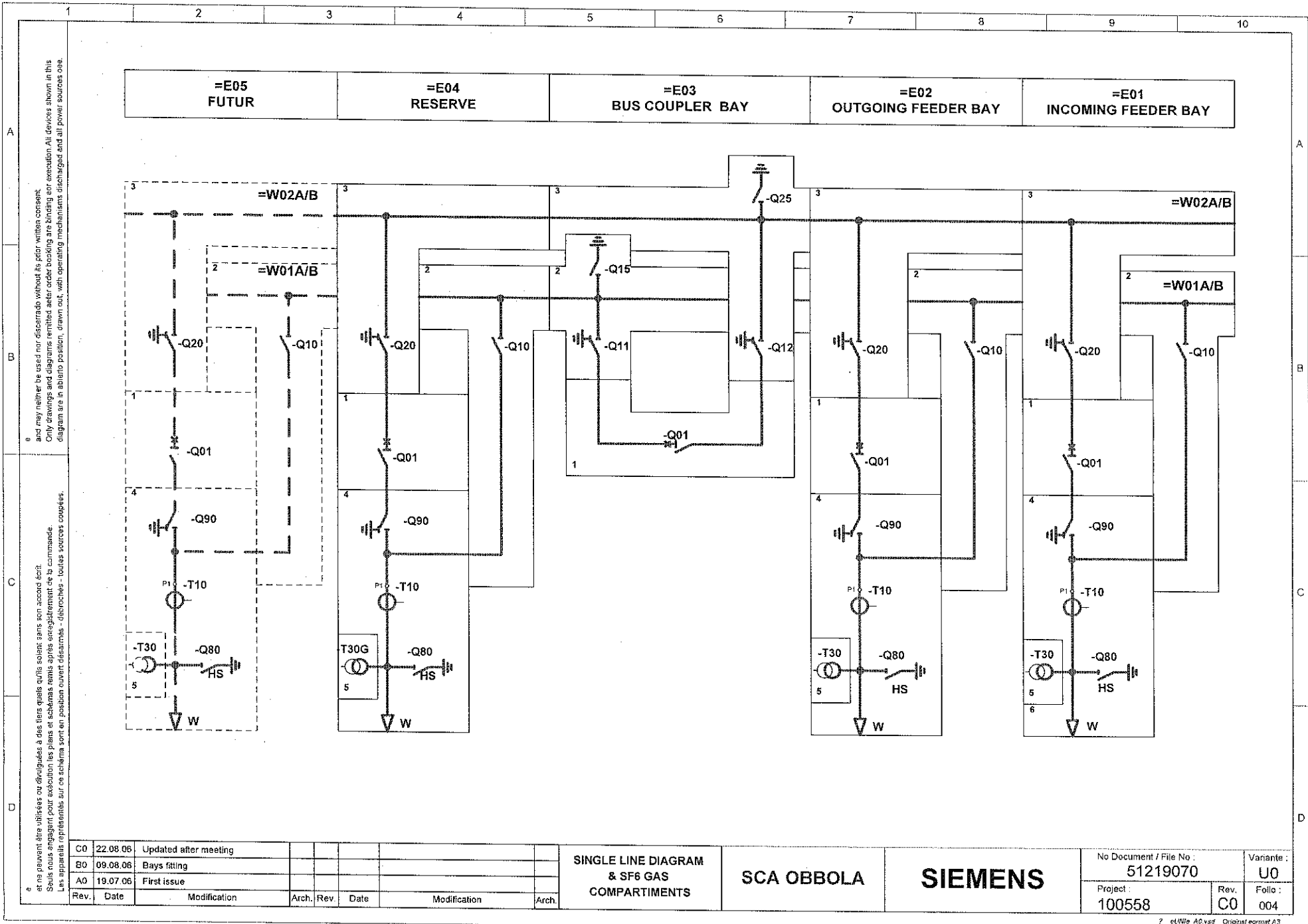
CO	22.08.06	Updated after meeting						
BO	09.08.06	Bays fitting						
A0	19.07.06	First issue						
Rev.	Date	Modification	Arch.	Rev.	Date	Modification	Arch.	

LEGEND

SCA OBBOLA

SIEMENS

No Document / File No : 51219070		Variante : U0	
Project : 100558	Rev. C0	Folio : 003	



and may neither be used nor disseminated without its prior written consent.  
 Only drawings and diagrams furnished after order booking are binding for execution. All devices shown in this diagram are in blank position, drawn out, with operating mechanisms discharged and all power sources dead.

et ne peuvent être utilisées ou divulguées à des tiers qu'ils soient sans son accord écrit.  
 Seuls nous engageons pour exécution les plans et schémas remis après enregistrement de la commande.  
 Les appareils représentés sur ce schéma sont en position ouverte désarmés - débrochés - toutes sources coupées.

CO	22.08.06	Updated after meeting					
BO	09.08.06	Bays fitting					
AO	19.07.06	First issue					
Rev.	Date	Modification	Arch.	Rev.	Date	Modification	Arch.

SINGLE LINE DIAGRAM  
 & SF6 GAS  
 COMPARTMENTS

SCA OBBOLA

SIEMENS

No Document / File No :		Variante :	
51219070		U0	
Project :	Rev.	Folio :	
100558	C0	004	



Transmission & Distribution

# DOCUMENTS TRANSMITTAL SHEET

Firm / Sté **Siemens**  
 Dept. / Dépt.  
 Attn. / A **L.ANDERSON / G.WIMMER** Fax +  
 From / De **Jean Claude CHARRIOT** Fax +33 4 56 58 74 82  
 E-mail Jean-claude.charriot@siemens.com Tel. +33 4 56 58 74 82  
 BD / Division Business Division Products / H2G Factory  
 Please copy to /  
 Merci faire copie à  
 Date: 08/09/2006 Pages 1 incl. 1

Project : SCA OBBOLA	Date of Submittal :
Contract No:	Submittal N° : OBB/CRT/006 Our letter ref.: Your ref :

Item n°	Document / Drawing	Rev	Description / Title / Remarks	Sets
01	51219070F0	B0	GIS LAYOUT	1

Purpose of Submittal	Discipline	Approval stage
For Approval	<b>X</b> <b>Electrical</b>	A Approved as Submitted
<b>X</b> <b>For Information</b>	Protection & Control	B Approved except as noted
For Approval for Construction	Civil	C Approved except as noted and resubmit
Resubmission	Electro-mechanical	D Rejected
As-built		E For Information. No action taken

Remarks : 1 We clarify that above submittal has been reviewed in detail and correct and strict conformance with the contract drawings and Specification except as otherwise stated below  
 2 We request your early approval for above DTs **(only for information)**

Contractor : <i>JC CHARRIOT</i>	Customer / Consultant :
Signature :	Signature :
Date : <i>8/09/2006</i>	Date

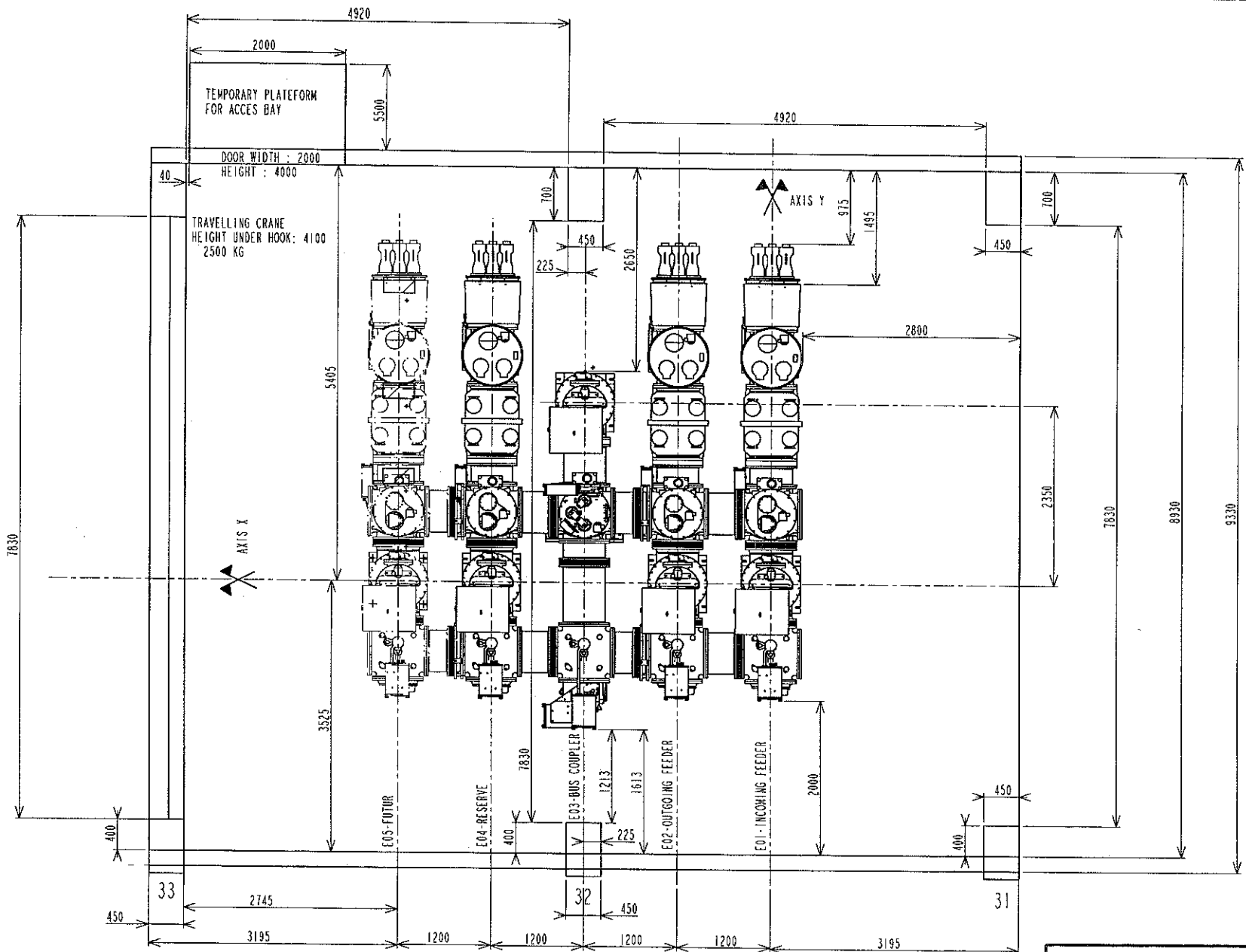
Jean-Claude Charriot  
 Project Manager

VA TECH Transmission & Distribution SA  
 1 rue de la Néva, BP 178  
 F-38004 Grenoble Cedex 1, France  
 Tel: +33 4 56 58 66 00

Internet: <http://www.vatech-td.com>

Société Anonyme with a capital of 16,040,000 EUR  
 Rcs Grenoble : 414 281 345 - code APE : 312 B  
 Siret : 414 281 345 000 44  
 N° ident. TVA : FR 22 414 281 345  
 Registered Office at : 1, rue de la Néva  
 F - 38004 Grenoble Cedex 1





es információs technológiák kizárólag a Siemens AG tulajdonában vannak. A Siemens AG a jelen dokumentumot kizárólag a Siemens AG számára készíti. A Siemens AG nem vállal felelősséget a dokumentum tartalmáért. A dokumentumot a Siemens AG kizárólag a Siemens AG számára készíti. A Siemens AG nem vállal felelősséget a dokumentum tartalmáért. A dokumentumot a Siemens AG kizárólag a Siemens AG számára készíti. A Siemens AG nem vállal felelősséget a dokumentum tartalmáért.

BO	04/09/06		Up dated
A0	16-08-06		Edition originale/first issue
Ind	Date	Note appl	Modification/modification
rev	date	appl.memo	

TOP VIEW

**SIEMENS**  
 Power Transmission and Distribution  
 High Voltage

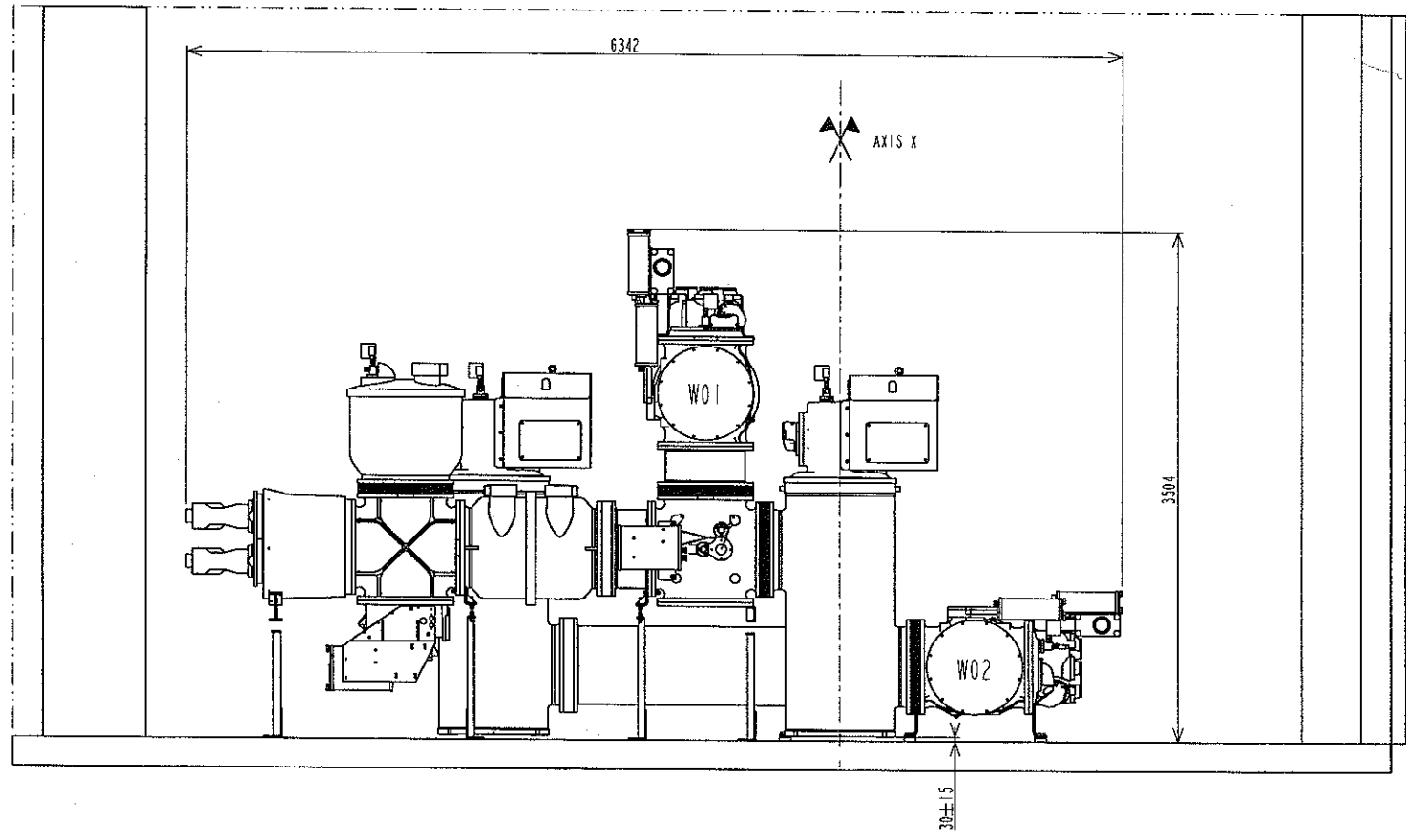
Ech.  
 scale 0.020

SCA OBOLA  
 145 KV

51219070F0 B02/8

Original format A3

Les informations techniques contenues dans ce document sont la propriété exclusive de VA TECH Transmission & Distribution SA et ne peuvent être utilisées ni divulguées à des tiers sans son accord écrit.  
 All technical information contained in this document is the exclusive property of VA TECH Transmission & Distribution SA and may neither be used nor disclosed without its prior written consent.



Ind	04/09/06		Up dated
rev	16-08-06		Edition originale/first issue
Ind	Date	Note appl	Modification/modification
rev	date	oppl, memo	

SIDE VIEW

**SIEMENS**  
Power Transmission and Distribution  
High Voltage

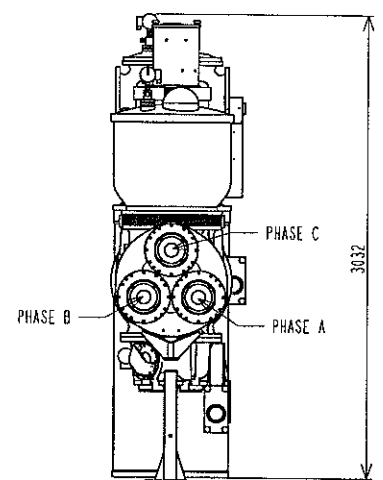
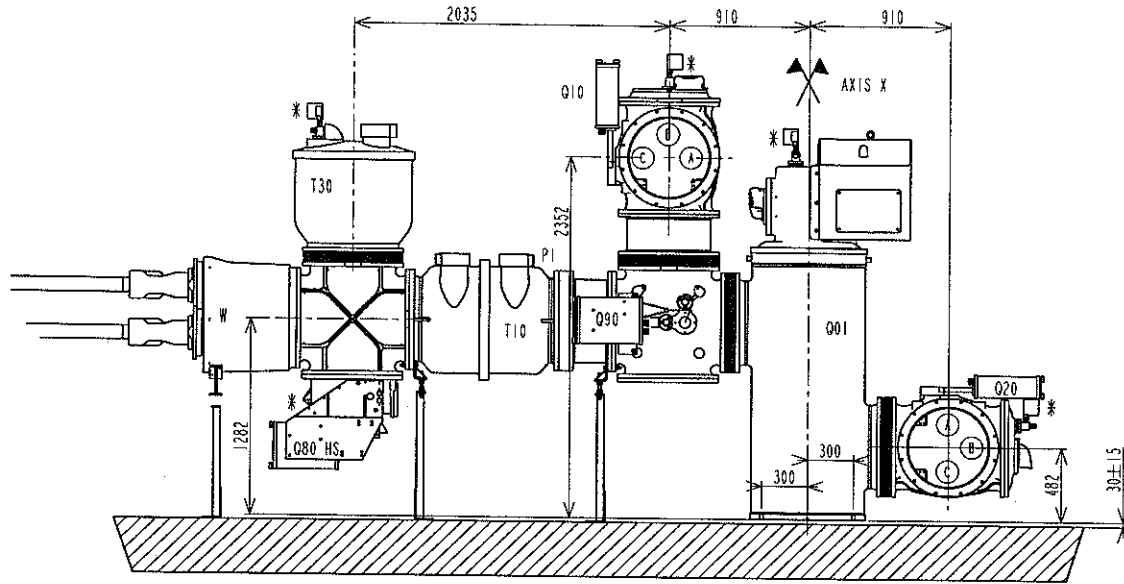
Ech.  
scale 0.030

SCA OBBOLA  
145 KV

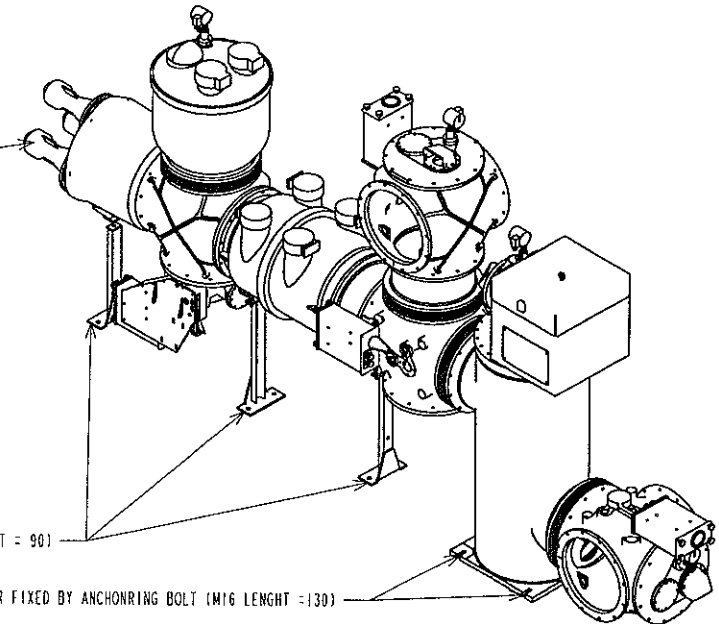
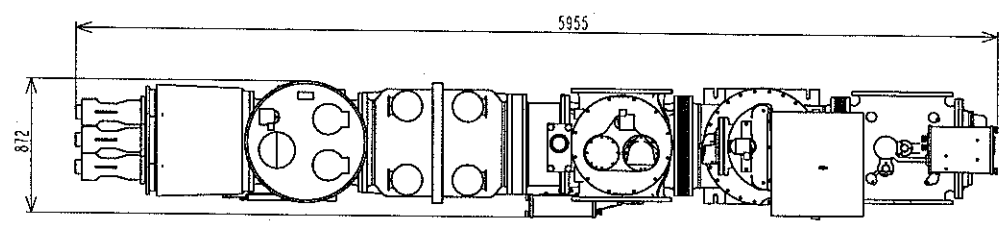
51.21.90.70.F.0 B.03/8



Les informations techniques contenues dans ce document sont la propriété exclusive de VA TECH Transmission & Distribution SA et ne peuvent être utilisées ou divulguées ou des tiers sans son accord écrit.  
 All technical information contained in this document is the exclusive property of VA TECH Transmission & Distribution SA and may neither be used nor disclosed without its prior written consent.



THE CABLE BOX IS NOT PLANNED TO SUPPORT THE WEIGHT OF SUPPORT CABLES. THOSE CABLES MUST BE HOLD BY EXTERNAL BEAMS.



■ : GAS TIGHT INSULATOR  
 \* : PRESSURE SWITCH

BO	04/09/06	Up dated
A0	16-08-06	Edition originale/first issue
ind/rev	Date/date	Note appl/Modification/modification
No.41.01.19 ind.AA		

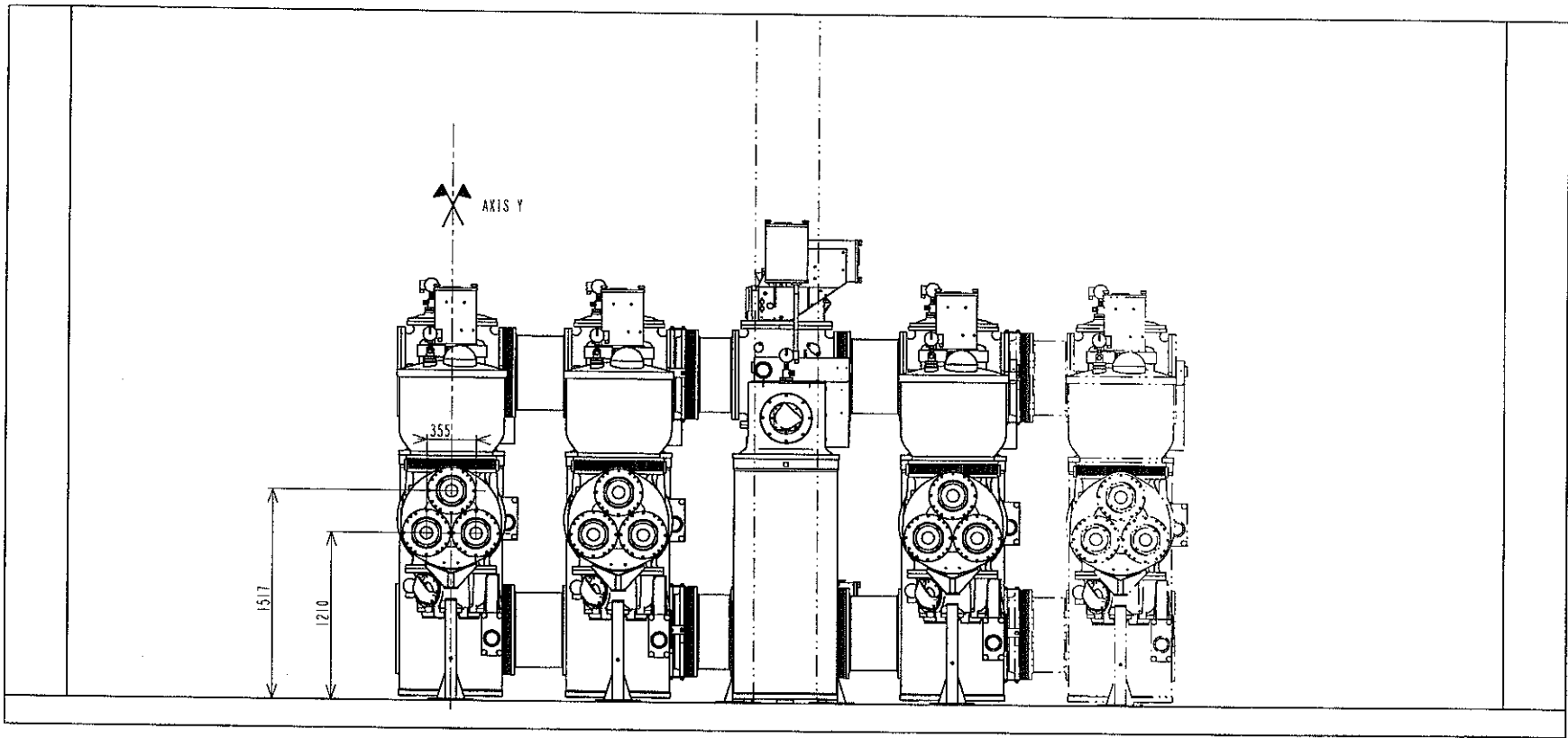
BAY  
 E01 , E02 , E04 AND E05

**SIEMENS**  
 Power Transmission and Distribution  
 High Voltage

Ech. scale 0.030

SCA OBBOLA  
 145 KV  
 5.1.2.1.9.0.7.01.F.0

ind/rev/Folio/sheet  
 B0/5/8  
 Original format A3



Les informations techniques contenues dans ce document sont la propriété exclusive de VA TECH Transmission & Distribution SA et ne peuvent être utilisées ou divulguées ou les tiers qu'ils soient sans son accord écrit.  
 All technical information contained in this document is the exclusive property of VA TECH Transmission & Distribution SA and may neither be used nor disclosed without its prior written consent.  
 No. 41.01.19 ind.AA

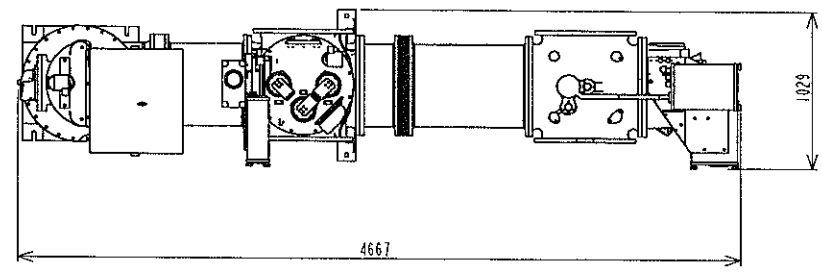
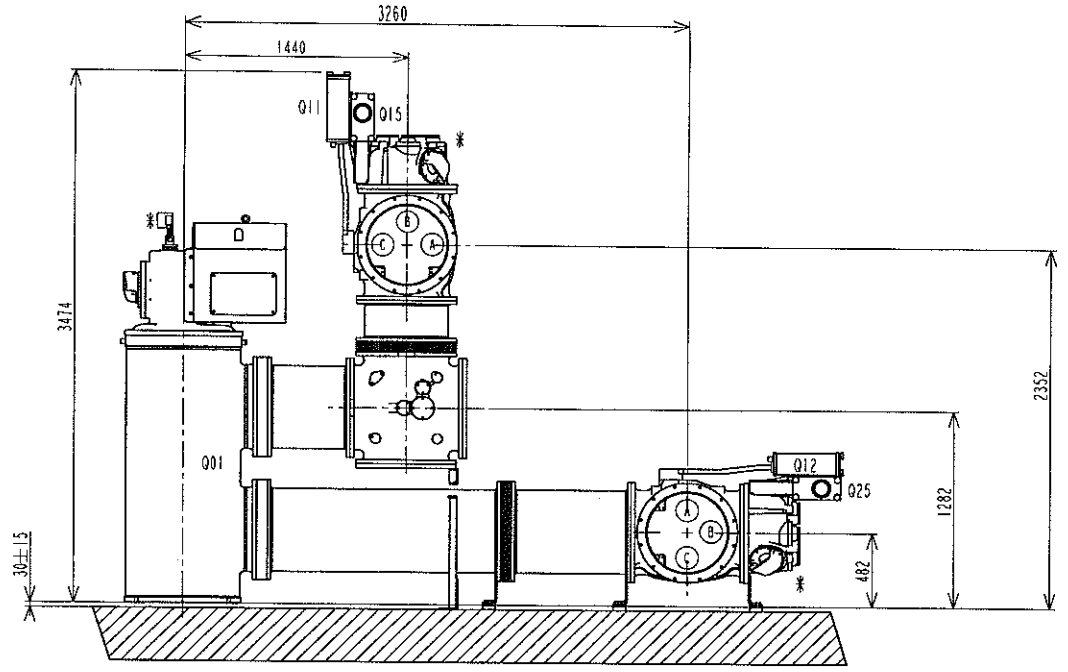
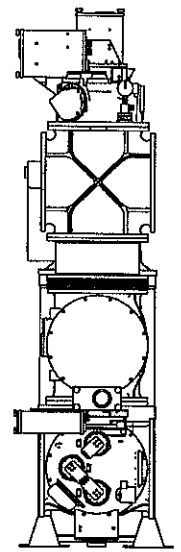
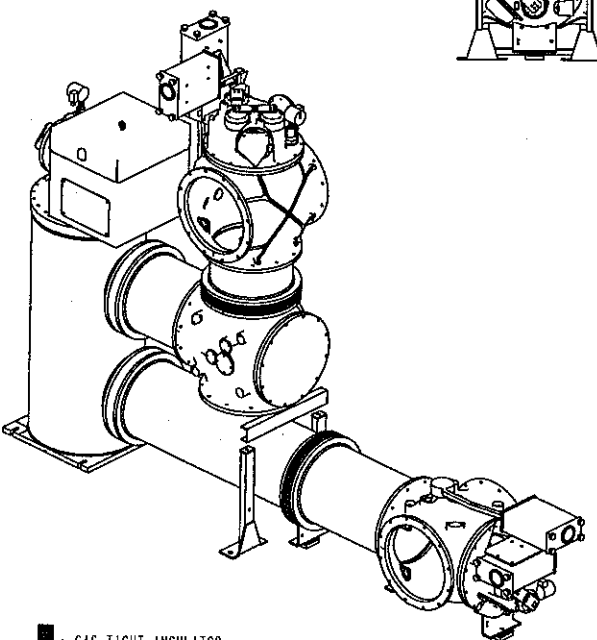
BO	04/09/06		Up dated
A0	16-08-06		Edition originale/first issue
ind/rev	Date date	Note appl appl. mémo	Modification/modification

**BACK VIEW**

**SIEMENS**  
Power Transmission and Distribution  
High Voltage

SCA OBBOLA  
 145 KV  
 Ech. scale 0.030  
 512190701F0 B06/8  
 ind/rev Folio/sheet  
 Original format A3

Les informations techniques contenues dans ce document sont la propriété exclusive de VA TECH Transmission & Distribution SA et ne peuvent être utilisées ou divulguées à des tiers qu'avec l'accord écrit.  
 All technical information contained in this document is the exclusive property of VA TECH Transmission & Distribution SA and may neither be used nor disclosed without its prior written consent.



■ : GAS TIGHT INSULATOR  
 \* : PRESSURE SWITCH

BO	04/09/06		Up dated
AO	16-08-06		Edition originale/first issue
Ind rev	Date date	Note appl appl, memo	Modification/modification

**BUS COUPLER BAY**  
**E03**

**SIEMENS**  
 Power Transmission and Distribution  
 High Voltage

Ech.  
 scale 0.030

SCA OBBOLA  
 145KV

5.1.2.1.907.01.F.0

ind/rev/Folio/sheet  
**B07/8**  
 Original format A3

2

3

4

5

6

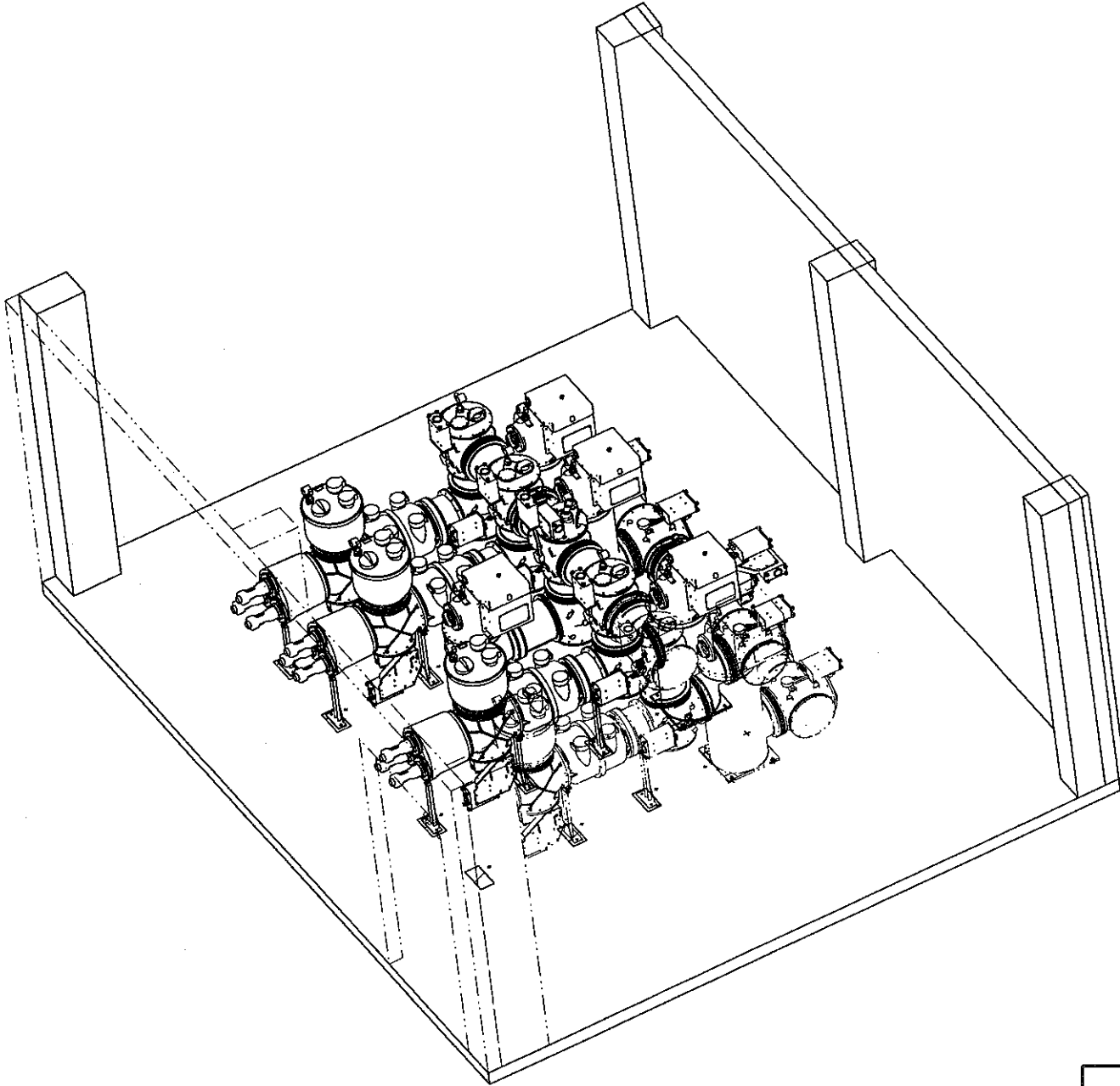
7

8

9

10

COLOR OF GIS  
RAL 7035



Les informations techniques contenues dans ce document sont la propriété exclusive de VA TECH Transmission & Distribution SA et ne peuvent être utilisées ou divulguées à des tiers quels qu'ils soient sans son accord écrit.  
 All technical information contained in this document is the exclusive property of VA TECH Transmission & Distribution SA and may neither be used nor disclosed without its prior written consent.

BO	04/09/06		Up dated
AD	16-08-06		Edition originale/first issue
Ind/rev	Date	Note appl/ appl.memo	Modification/modification

No.41.OI.19 ind.AA

PERSPECTIVE VIEW

**SIEMENS**

Power Transmission and Distribution  
High Voltage

Ech.  
scale 0.018



SCA OBBOLA  
145 KV

5.1.2.1.9.0.7.0 | F.0 | Ind/rev/Folio/sheet  
B0 | 8/8

Original format A3