

Anlagen Nr.:	101567	Kom.:	Feiring – Eidsvoll
Plant No.:		Com.:	
AB-Nr.:	158248	Anlagenteil:	Mischgutverladesilo
Order No.:		Plant section:	Mixed material storage silo

### Mischgutverladesilo / Mixed material storage silo

# BENNINGHOVEN

**Benninghoven GmbH & Co. KG**  
 Industriegebiet  
 54486 Mülheim / Mosel  
[www.benninghoven.com](http://www.benninghoven.com)

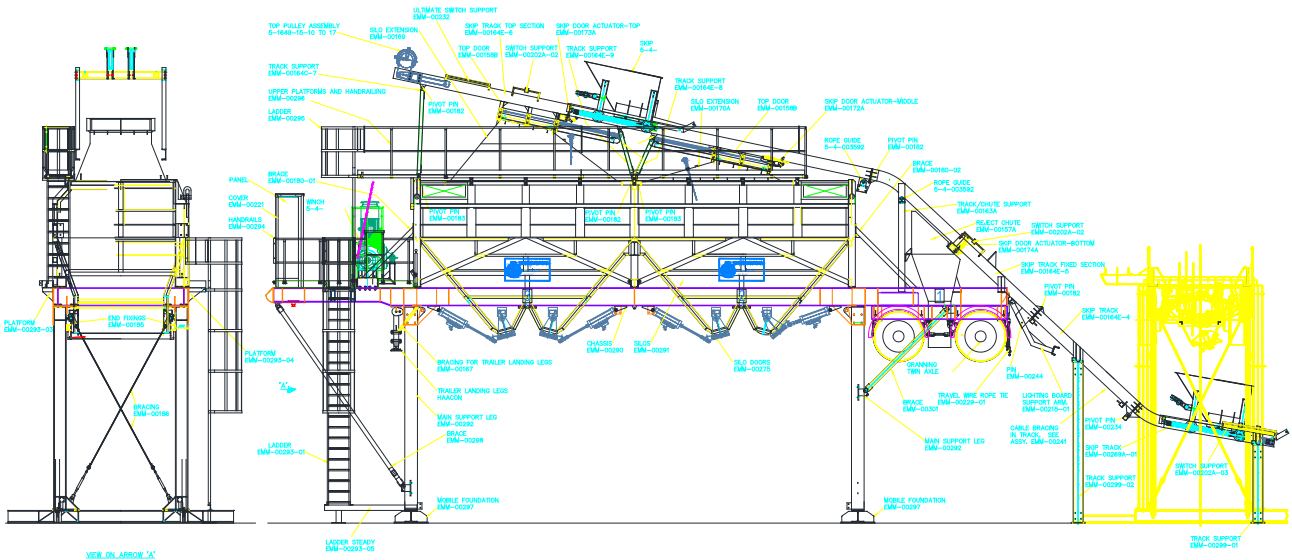
Bezeichnung / denomination / désignation: **Mischgutverladesilo**

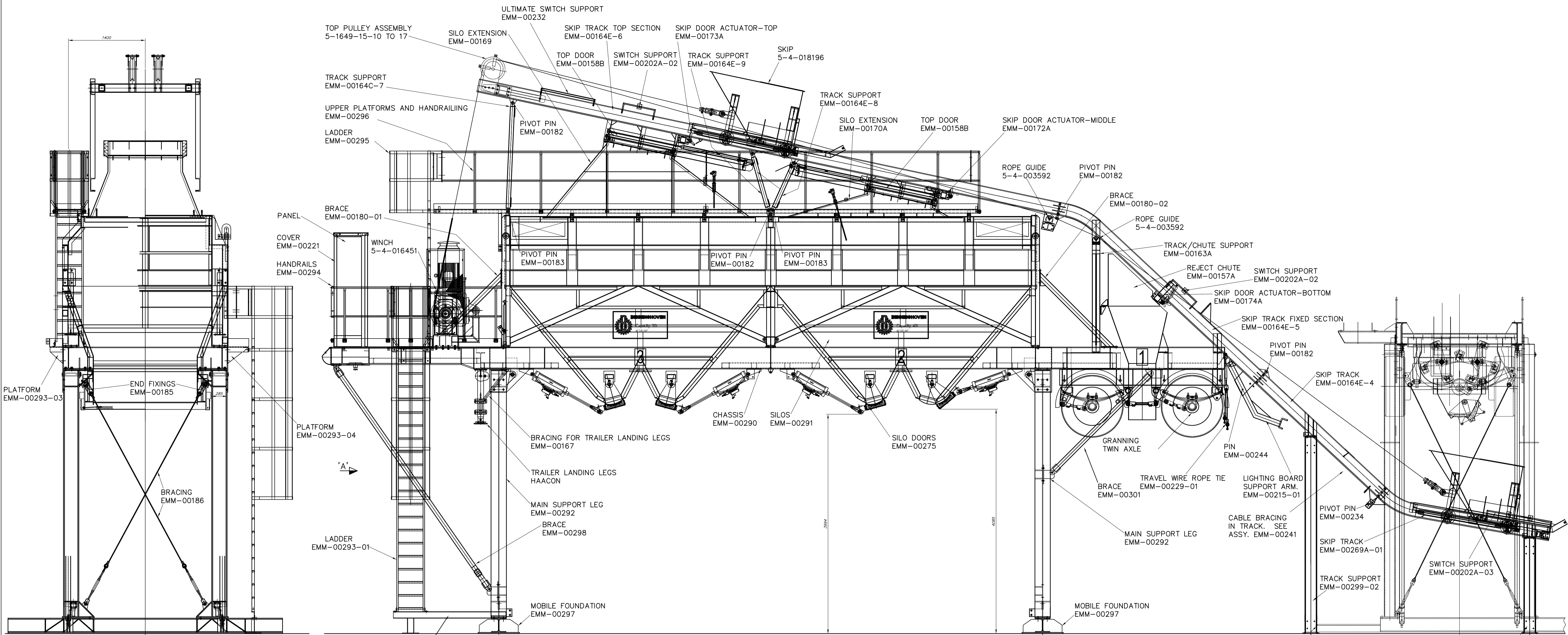
Typ / type / Type: **MVS 90/2**

Maschinen-Nr. / machine-no. / Numéro de machine: **2434**

Baujahr / year of manufacture / Année de construction: **2013**

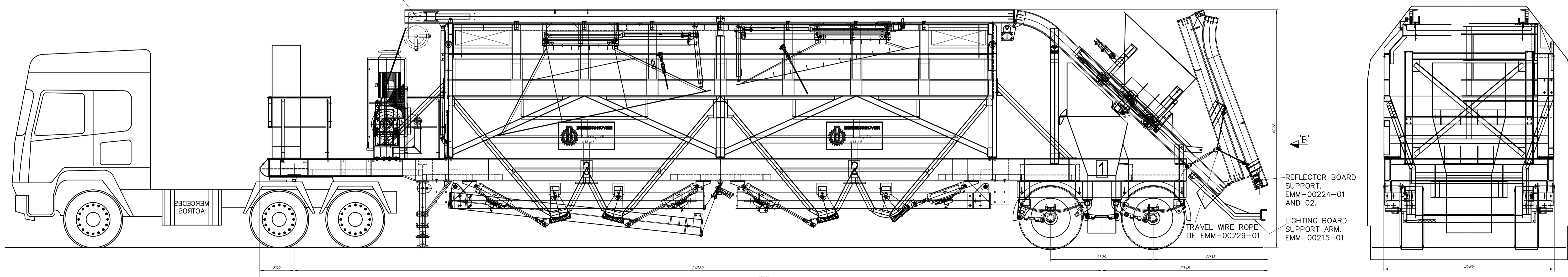
<b>Artikel- Nr.</b>	<b>90-037360</b>
<b>Spare part no.</b>	





VIEW ON ARROW 'A'

FOR TRANSPORT REMOVE LEFT AND RIGHT BOLTS AND SWIVEL ON CENTRE BOLT.



VIEW ON ARROW 'B'

MANUFACTURING TOLERANCES				Ref.	Description	Date	Name
SIZE	UP TO 120	120 TO 315	315 TO 1000				
PLATEWORK	± 1.0mm	± 1.2mm	± 2.0mm	± 3.0mm			
WELDED ASSY.	± 1.5mm	± 2.0mm	± 3.0mm	± 4.0mm			
MACHINING	± 0.3mm	± 0.5mm	± 0.8mm	± 1.2mm			

Drawn By	17/09/10	Name	A.C. Clarke	Date	17/09/10
Checked By		Name		Date	
Passed By		Name		Date	
Scale	1:25	Size	AO	ARRANGEMENT OF 90T MOBILE MIXED MATERIAL UNIT TO WORK WITH HIGH LEVEL ASPHALT PLANT FOR RAIL TRAVEL.	
BENNINGHOVEN UK LTD			COMBUSTION TECHNOLOGY AND ASPHALT COATING PLANTS		
Drawing Number					EAR-00389
Sheet Number					

**BUILD LIST – 90 TONNE STANDARD  
ISSUE - 03**

Customer: Mülheim AB-TBC  
 Site: Stock Production  
 Plant: Mobile Mixed Material Storage System – 90 Tonnes Updated Mods  
 Machine: 2.5T Skip High Level

Project No.: OC7417  
 Issued By: M.Toon  
 Issue Date: 25/01/12  
 Required Date: 10/08/12

Ref.	Part. No.	Description	Supplier Ref. / Drg. No.	Qty	Supplier	Order No.	Ack. Date	Drg Issue	D
1		Chassis	EMM-00290-C Shts 1 & 2	1 each					
2									
3	MB-000002	Granning Axle Assembly		1 Set					
4	MB-000003	Granning Braking Equipment including		1 Set					
5		Type 30 Chambers – Slack Adj. 114mm							
6	MB-000005	Granning Pipe Kit		1 Set					
7		Packers – Axle to Sub-frame	EMM-00177	1 Set					
8		Handbrake Support Bracket		1 each					
9		Bracing for Landing Legs	EMM -00167	1 Set					
10		Trailer Landing Legs - Haacon	Type 1040 K 012 G	1 Set					
11		King Pin - 2”	KZ 1012	1 each					
12		Mudguards	H 4222	4 each					
13		Lighting Board		1 Set					
14		Cable Support - Chassis	EMM-00227	21 each					
15		Cable Support – Lower Track	EMM-00228	10 each					
16									
17		Morris Hoist – 750 kg Max. Capacity	PL Series Levalift	1 each					
18		Hoist Bracket	EMM-00189	2 each					
19									
20		25 thick x 40 wide x 5 m long Silicone Sponge Strip	With Self-Adhesive Backing	25 metres					

**BUILD LIST – 90 TONNE STANDARD  
ISSUE - 03**

Customer: Mülheim AB-TBC  
 Site: Stock Production  
 Plant: Mobile Mixed Material Storage System – 90 Tonnes Updated Mods  
 Machine: 2.5T Skip High Level

Project No.: OC7417  
 Issued By: M.Toon  
 Issue Date: 25/01/12  
 Required Date: 10/08/12

Ref.	Part. No.	Description	Supplier Ref. / Drg. No.	Qty	Supplier	Order No.	Ack. Date	Drg Issue	D
21		Storage Silos and Integral Structure	EMM-00291-A Shts 1 to 2	1 each					
22									
23		Cladding Sheets for Silos	EMM-00291-A Shts 3 & 4	1 set					
24		Insulation for Silos – 100 thick (Slab)	100 kg/m <sup>2</sup> Density	90 m <sup>2</sup>					
25		Discharge Door	EMM-00276-A	4 each					
26		Assembly details of Doors to Silos	EMM -00275-C	4 sets					
27		Silo Extension – (Small for 40 t. Silo)	EMM -00170-E	1 each					
28		Silo Extension – (Large for 50 t Silo)	EMM -00169-E	1 each					
29		Bracing to Chassis	EMM-00180-A	1 set					
30		Pneumatic Cylinder + Sol. Valve 24V	RA/8160/M/450 D+F	4 each					
31		Door Heaters – 800W/230V 700mm lg.	90-018988	16 each					
32		Temperature Probe	90-014308	8 each					
33		High Level Indicator – 800 long	VEGACAP 64	1 each					
34		High Level Indicator – 500 long	VEGACAP 64	1 each					
35									
36		Air Reservoir – 60 litres – 12.5 bar.		1 each					
37		Pneumatic Piping and Fittings		1 set					
38									
39		Top Door	EMM-00158-C	2 each					
40		Wheel – P Polyurathane - Torwegge	620/080K	8 each					

**BUILD LIST – 90 TONNE STANDARD  
ISSUE - 03**

Customer: Mülheim AB-TBC  
 Site: Stock Production  
 Plant: Mobile Mixed Material Storage System – 90 Tonnes Updated Mods  
 Machine: 2.5T Skip High Level

Project No.: OC7417  
 Issued By: M.Toon  
 Issue Date: 25/01/12  
 Required Date: 10/08/12

Ref.	Part. No.	Description	Supplier Ref. / Drg. No.	Qty	Supplier	Order No.	Ack. Date	Drg Issue	D
41		Proximity Switch - Telemecanique	XSA-V11373	2 each					
42		Self- Lubricating Bush	GLY PG 505540F SKF PCM505540E	8 each					
43		Pneumatic Cylinder + Sol. Valve 24V	RA/8063/M/1220 C+H+F	2 each					
44		Side Guide Rollers	6301-2RS1	8 each					
45									
46		Skip Assembly – 3000 kg cap.		1 each					
47		Head Pulley Assembly	5-4-006159	2 each					
48		Intermediate Roller Assembly	5-4-003592	4 each					
49		Buffers	38654	4 each					
50		Track Proximity Switch		4 each					
51		Brackets for Track Proximity Switches	EMM-00202-A	1 set					
52		Support Bracket for Top Ultimate L/S	EMM-00232	2 each					
53		Skip Track – Incl. Support Frames	EMM-00164-F	1 each					
54		Tie Beam for Folding Track	EMM-00205	1 each					
55		End Fixings for Tensioners	EMM-00235	2 each					
56		Tie Cable - Track	EMM-00240	2 sets					
57		Cable End	EMM-00203	2 each					
58		Bracing Wires and Tensioner Assembly	EMM-00241						
59		Tie Beam	EMM-00233	1 each					
60		Addition of Tie Beam to Track	EMM-00238						

**BUILD LIST – 90 TONNE STANDARD  
ISSUE - 03**

Customer: Mülheim AB-TBC  
 Site: Stock Production  
 Plant: Mobile Mixed Material Storage System – 90 Tonnes Updated Mods  
 Machine: 2.5T Skip High Level

Project No.: OC7417  
 Issued By: M.Toon  
 Issue Date: 25/01/12  
 Required Date: 10/08/12

Ref.	Part. No.	Description	Supplier Ref. / Drg. No.	Qty	Supplier	Order No.	Ack. Date	Drg Issue	D
61		Track Support Frame & Hopper Supt.	EMM-00163-A	1 each					
62		Pivot Pin - Track Joints and Support	EMM-00182	10 each					
63		Pivot Pin - Track Joints	EMM-00234	2 each					
64		Pivot Pin - Track Support to Silo	EMM-00183	6 each					
65		Skip Transit Channel	EMM-00308	1 each					
66		Skip Door Actuator - Middle	EMM-00172-C	1 each					
67		Skip Door Actuator - Top	EMM-00173-C	1 each					
68		Skip Door Actuator - Bottom	EMM-00174-C	1 each					
69		Pneumatic Cylinder + Sol. Valve 24V	RA/8063/M/80 D+F	2 each					
70		Cylinder Rod Extension Piece	EMM-00200	1 each					
71		Self Lubricating Bush	SKF PCM303440E	12 each					
72		Spirol Pin	CLDP 8x50 MBK	9 each					
73		Spring for Top Actuator	T32870	1 each					
74									
75		Winch Assembly – 45 kW	5-4-016451	1 each					
76		Wire rope – 16 mm dia.		2 each					
77									
78		Main Support Legs	EMM-00292-C	1 set					
79		Bracing Wires and Tensioner Assembly	EMM-00186	4 sets					
80		End Fixing for Cable	EMM-00185	4 each					



