

CHINA RAILWAY TUNNEL GROUP
Birger Jarlsgatan 14
114 34 Stockholm



Thanks for the order on

Boomer XE3

BOOMER XE3C comes with a rigid carrier, rear wheel steering and a six-cylinder Stage 5 engine.

BUT 45 boom with faster and higher precision of the drilling. RCS 5 based control system for high productivity and precision. 15 " touch screen with two multifunction joysticks on the control panel. Equipped with robust COP3038 rock drills.

FOPS certified large and ergonomic cab with noise levels reduced to 80 dB (A). Ability to work both standing and seated with ergonomic operator panel. The machine is equipped with Epiroc automatic rod handling systems RHS E, for 24 meters plus feed length for grouting hole drilling on all booms.

Contact:	Per Holmberg
Phone:	+46 73 2741955
E-mail:	Per.holmberg@epiroc.com
Offer number:	MO20-4629-2 Eng
Datum:	2020-05-12

Epiroc Sweden AB

Epiroc Sweden AB
105 23 Stockholm
Sweden

Besöksadress:
Sjöbodavägen 9
Norsborg, Sweden

Kundservice: 020-78 44 55
www.epiroc.com/se
Certifierad enl. SS-EN ISO 9001

Organisationsnummer:
SE 556 100-1453
Säte: Nacka, Sweden

Eng

Carrier

Engine	Deutz TCD 6.1, Tier 5, 180 kW at 2300
r/min. Catalyst and particular filter	
Fuel tank capacity	150 liters
Electricity systems	24 V
Batteries	2 x 125 Ah
Hydrodynamic transmission,	Dana 32000
Front axle	Dana 37R 116
Rear axle	Dana 213 by oscillation $\pm 7^\circ$
Tires:	14:00 x R24
Hydraulic jacks front	2 pcs. Extendable sideways
Hydraulic jacks rear	2 pcs.
Two separate circuits for service braking.	
Disc brakes, hydraulically actuated by two separate brake circuits.	
Parking and emergency brake type:	SAHR (Spring applied Hydraulic
Released)	
Fire System	FORREX
Hand held fire extinguisher	
Tramming lights	8x40W LED, 2x70W
Work lights,	2x160W+6x60W
2 pcs. Joystick controlled spotlights	
Reverse alarm:	Beacon and sound
Grease hose reel with 15 meter hose complete with handles between front jacks	
Washing hose with handle between front jacks	

Control system, Rig Control System RCS 5

15 "touch screen with ergonomic operator panel with two multifunctional joystick for drilling.

Two separate operator panels, one sitting to the left and one standing to the right
Advanced Boom Control, ABC Total, for fully automatic drilling, digital drill plans and continuously monitoring of the drilling process.

Underground Manager PRO (replacing Tunnel Manager).

The drilling system also includes RPCF (anti jam protection) and FPCI (feeding pressure controlled percussion pressure).

Pre set adjustment of drilling parameters for 5 different hole sizes.

Two different navigation methods as standard, mine navigation and laser navigation.

Adjustable operator panel.

Pressure settings, diagnosis, troubleshooting, and spare parts catalog true the control panel and data transfer thru USB memory or optional WLAN.

MWD in all three booms, drill and key data is stored for future analysis

Eng

"Drill stop protection"

Cabin

FOPS certified cabin, noise level of 80 dB (A)
Hydraulic cabin lift 0-1100mm
Armored Glass 22MM (only front window)
Hydraulic driven air conditioner / heater
Filters on air inlet
Driver's seat with seat belt
Electric height adjustable seat for drilling
Illuminated stairs for cabin
Music player with USB connection
Boots washing device
Reversing camera
230 Volt outlet in cab
Shock and vibration damped.

Rock drill COP 3038

Shank adapter	TC42
Impact energy at max working pressure	30 kW
Stroke frequency	102 Hz
Maximum working pressure	200 bar
Rotation speed	0-380 r/min
Max torque	190 Nm
Lube Air consumption	5 l/sec
Water consumption	190 Liters / min
Weight	165 kg

Eng

Feed BMH6000-series

The drill rig can upon order be equipped with feeds from 14 to 21 foot without extra cost.

BMH 6920	20 foot
Total length mm	7778
Drill steel length mm	6100
Hole depth mm	5234
Weight incl rock drill kg	865
Feeding force kN	22,0
Rod adding system RHS E (Carousel) on each boom	8*10 foot rods in each

Boom BUT45 L

Feed extension	1.800 mm
Boom extension	2.500 mm
Parallel holding	Electronic
Turning device feed	190°
Max lifting angle	+55° / -42°
Max swing angle	±42°
Automatic lubrication for rear part of boom	
Weight	3200kg
Top or side mounted feeds	

Hydraulic system

Three separate pump circuits, one for each boom.

Each circuit consists of two variable pumps for percussion and positioning and a fixed pump for rotation and compressor.

The pumps are unloaded at startup.

System pressure: max. 250 bar.

Hydraulic Oil volume: max. 755, min 470 liters

Water-cooled oil cooler, stainless

Oil temperature gauge on the tank and low oil level indicator

Electrical oil filling pump

Eng

Air system

Hydraulically driven Atlas Copco GAR 30 screw compressor
Max capacity of 62 l/s at 10bar.
"Hole blowing kit" with 80 liter air tanks
Air pressure gauge

Water system

Hydraulic-driven booster pump. Maximum capacity 750 l/min at 30 bar
Minimum water inlet 3bar
Water pressure gauge
Water flow gauge
Water reel including 60 meters of 2" hose.
Rig washing kit

Electrical system

Main motors	3x 95 kW sf 1,3
Total installed power	312 kW
Voltage	1000Volt
Frequency	50 Hz
Electronic overload protection for electric motors	
Digital volt meter	
Battery Charger	
Earth fault indicator	
Additional transformer	15kVA
Electrical cable on reel	
Dual control for cable reel	
Electric outlet. 16 amp and 32 Amp	
Power Cable with plug 175 meter	

Eng

Service platform

Epiroc service platform P3
Service platform with swingable basket.
Height adjustable roof for the basket.
Parallel holding (horizontal plane).
Dual controls, both from cab and basket.
Water and air outlet in the service platform

Measurement

Weight (standard equipment)	50 000 kg
With	2.930 mm
Height	3.660 mm
Height with cabin raised	4.760 mm
Length with BMH 6920 feed	17 851 mm

Additional equipment

TOTAL STATION navigation
Rod handling system RHS E Auto
WLAN
Mini SSE

Price

Total price acc. the above specification for Boomer XE3C30 per unit: Practical start-up /training are included for 3* 8 hour days included Total Station.

Price 13 800 000 SEK Excl. VAT

Total price acc. the above specification for Boomer XE3 per unit for a 12 month contract: Practical start-up /training are included for 3* 8 hour days

Rental price: 350 000 SEK. excl. VAT / Month.

Eng**Payment, delivery and warranty conditions**

According NL 09. Reparation 11. EX WORKS ÖREBRO. Item will remain Epiroc Sweden AB's property until it has been fully paid.

Warranty: 12 month after commission

Delivery time:

Normal delivery time is 33 weeks after written order. At the risk of intermediate sales.

Delivery time Rental

Machine Boomer XE3: Machine Nr1 June 2020

Machine Boomer XE3: Machine Nr 2 August 2020

Rental: Option to purchase.

12 month rental 92% of paid rental will be credit.

24 month rental 88% of paid rental will be credit.

30 month rental 82% of paid rental will be credit

Best regards

A handwritten signature in blue ink, appearing to read 'Per Holmberg', with a stylized flourish at the end.**Per Holmberg**

Business Line Manager underground equipment Rock Excavation

Epiroc Sweden AB

Eng

Always close at hand

We are responsible for sales and service of mining and rock excavation equipment in Sweden, Denmark and Greenland we have a nationwide network of service centers and well-trained service technicians always ready to help.



Epiroc Servicecenter:

Kiruna	0980-122 40	Stockholm	08-747 66 70
Gällivare	0970-162 20	Zinkgruvan	0583-822 00
Skelefteå	0910-142 55	Göteborg	031-58 05 10

Measurements

SIDE VIEW

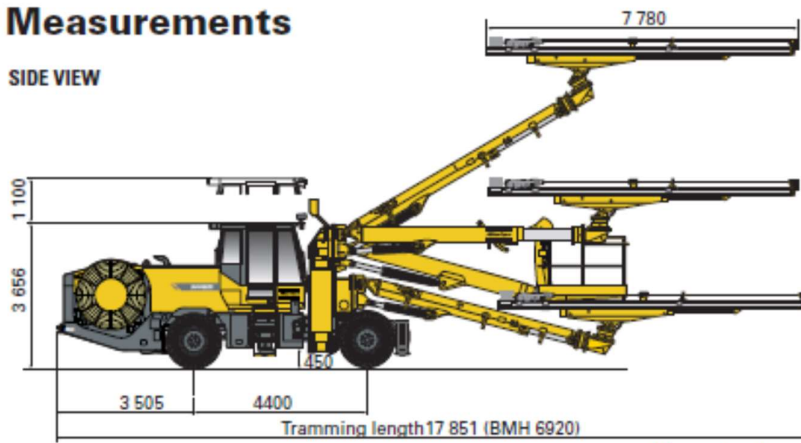
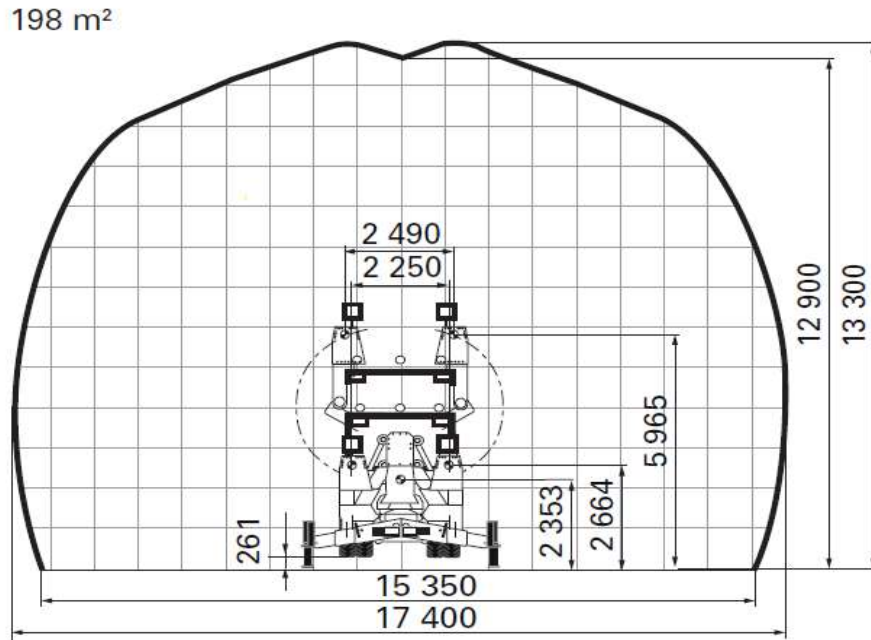


Illustration shows rig with optional equipment mounted.

Eng



Boomer XE3: Left coverage area, right measurements.