



Maeda MC405CRM

Technical specifications

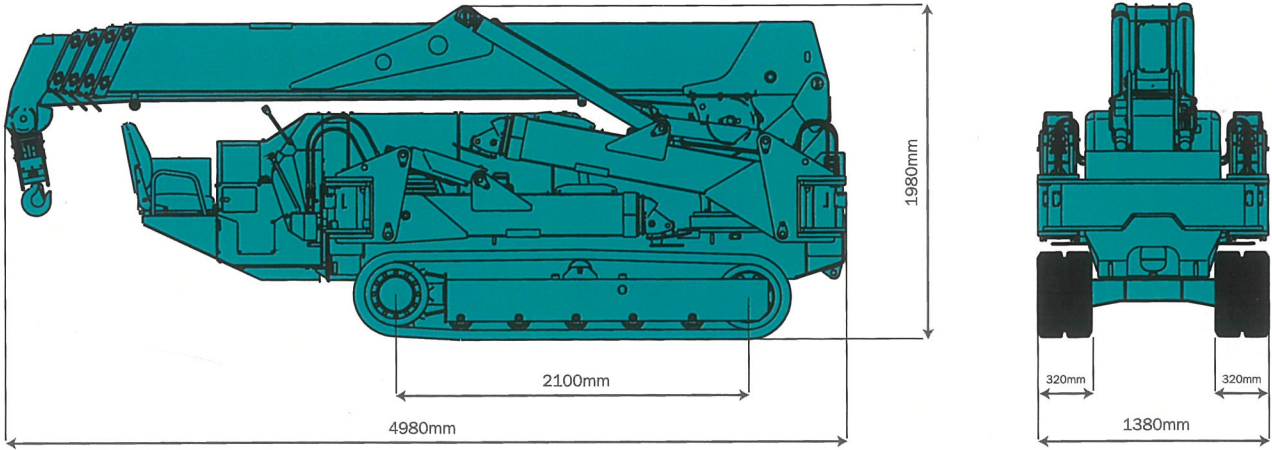
Offering the best balance of power and design



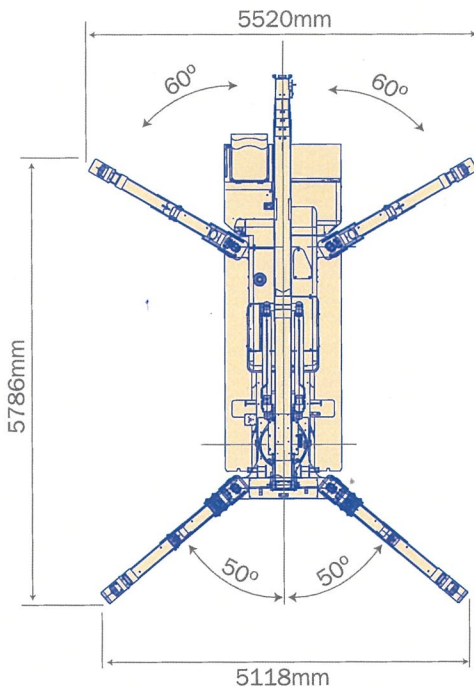
- Pick & Carry Duty (500kg maximum)
- Two Travel Speeds
- Programmable Moment Limiter
- 1130kg at 5.0m radius on 16.43m boom
- Rubber Tracks
- Hydrostatic Transmission
- Centralised Controls
- 4 Fall / 2 Fall Hook Block
- Automatic Hook Stowage System
- Tilt Sensor/Alarm
- Powerful Winch with Hydraulic Disc Brake
- Two Speed Winch
- Fully Automatic Pentagonal Section Boom
- Cable Remote Controller

Specification		
Model		MC405CRM
Crane capacity		3.83t x 2.7m
Max. working radius		16m
Max. lifting height		16.8m
Hook speed		10m / min. (18.0m / min.) (4 falls, 4th layer)
Single line speed		40m / min. (72.0m / min.) (4th layer)
Hoist rope		IWRC 6 x WS(26) 8mm x 95m
Telescopic system	Boom length	4.735m - 16.475m
	Telescoping speed	11.7m / 54.2 sec (41.3sec)
	Boom type	Fully automatic 5 section pentagonal telescopic boom
Boom hoist system	Hoist angle / speed	0° - 80° / 24.5 sec (17.0 sec)
	Slew system	Slew angle / speed
Outrigger system	Type	Extension and set up by direct acting hydraulic cylinders
	Maximum extended dimensions	(Length) 5786mm x (Front) 5118mm x (Rear) 5520mm
Traction system	Drive	Hydraulic motor driven, stepless speed changer
	Travel speed	0 - 3.3 km/h
	Gradability	20°
	Crawler length x width Ground pressure	2100mm x 320mm 49.0 (0.50) kpa (kgf/cm ²)
Engine	Model	Yanmar 3TNV88-PMB
	Type	3 cylinder water cooled diesel
	Rated output	21.8kw/2400min-1 (29.6PS/2400rpm)
	Starting method	Electric
	Fuel / Fuel tank capacity	Diesel/60L
Remote control system	Type	Cable remote controller, micro-speed mode, load display for transmitter, outrigger operation
Dimensions	Length x Width x Height	4980mm x 1380mm x 1980mm
	Weight MC405CRM	5600kg
	Weight MC405CRME	5750kg
Standard equipment		Overwind protection, load indicator, hydraulic safety valve, wire rope latch, level, machine body inclination alarm, EMO switch, travel lock lever, outrigger interlock device, moment limiter, rotary lamp, 4-fall / 2-fall hook block.
Optional equipment		Radio remote control, white rubber tracks, single fall hook, searcher hook, fly-jib. Electric motor.

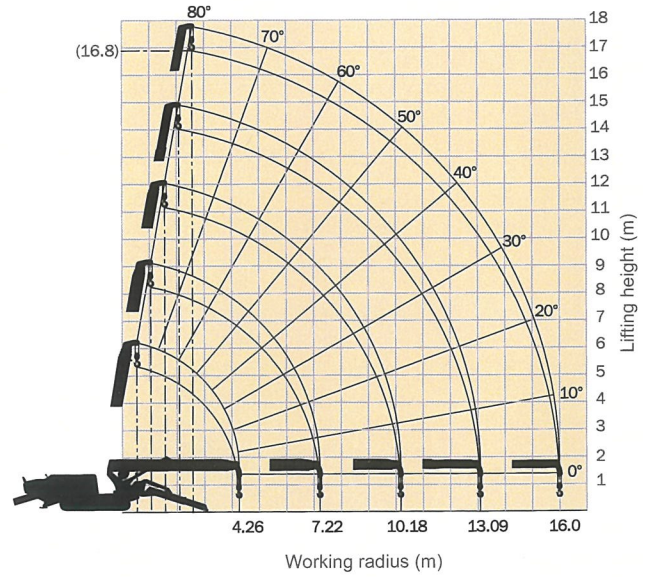
Overall Size



Outrigger Spread Dimensions



Working Range Chart



The Working Range Chart does not take into account boom deflection under load.

The maximum reach below ground level is:

Four Fall	Two Fall	Single Fall
20.50m	41.00m	82.00m



Total rated load (4 falls) Outriggers at Maximum position

4.735m/7.695m boom		10.655m boom		13.565m boom		16.475m boom	
Working radius (m)	Total rated load (kg)	Working radius (m)	Total rated load (kg)	Working radius (m)	Total rated load (kg)	Working radius (m)	Total rated load (kg)
< 2.7	3830	3.5	3030	4.0	2230	5.0	1130
3.5	3030	4.0	2580	4.5	1930	5.5	980
4.0	2580	5.0	2030	5.0	1730	6.0	910
5.0	2030	6.0	1680	6.0	1400	7.0	760
6.0	1680	7.0	1380	7.0	1180	8.0	650
7.0	1380	8.0	1130	8.0	1030	9.0	600
7.25	1330	9.0	880	9.0	930	10.0	550
		10.2	580	10.0	830	11.0	490
				11.0	690	12.0	440
				12.0	530	13.0	380
				13.1	430	14.0	320
						15.0	260
						16.0	210

Total rated load (4 falls) Outriggers at Intermediate position

4.735m/7.695m boom		10.655m boom		13.565m boom		16.475m boom	
Working radius (m)	Total rated load (kg)	Working radius (m)	Total rated load (kg)	Working radius (m)	Total rated load (kg)	Working radius (m)	Total rated load (kg)
< 2.7	3830	3.5	3030	4.0	2230	5.0	1130
3.5	3030	4.0	2580	4.5	1830	5.5	980
4.0	2580	5.0	1880	5.0	1630	6.0	910
5.0	1880	6.0	1430	6.0	1330	7.0	730
6.0	1430	7.0	1130	7.0	1080	8.0	630
7.0	1160	8.0	880	8.0	880	9.0	550
7.25	1120	9.0	740	9.0	730	10.0	480
		10.2	490	10.0	530	11.0	430
				11.0	480	12.0	380
				12.0	430	13.0	330
				13.1	330	14.0	280
						15.0	220
						16.0	180

Total rated load (4 falls) Outriggers at Minimum position

4.735m/7.695m boom		10.655m boom		13.565m boom		16.475m boom	
Working radius (m)	Total rated load (kg)	Working radius (m)	Total rated load (kg)	Working radius (m)	Total rated load (kg)	Working radius (m)	Total rated load (kg)
< 2.7	3830	3.5	3030	4.0	2230	5.0	1130
3.5	3030	4.0	2580	4.5	1830	5.5	980
4.0	2580	5.0	1680	5.0	1630	6.0	880
5.0	1680	6.0	1180	6.0	1180	7.0	730
6.0	1180	7.0	880	7.0	830	8.0	530
7.0	930	8.0	730	8.0	680	9.0	450
7.25	780	9.0	580	9.0	550	10.0	420
		10.2	400	10.0	430	11.0	370
				11.0	380	12.0	330
				12.0	350	13.0	280
				13.1	310	14.0	240
						15.0	190
						16.0	150



The Total Rated Load Charts are based on the actual working radius including boom deflection. The weight of the hook (standard 4 fall - 30kg) must be included as part of the load shown in the Total Rated Load Charts.

When using two fall or single fall hooks, use the appropriate four fall Total Rated Load Chart above but with a **maximum load** of: Two Fall - 1930kg, Single Fall - 970kg.



Maeda Mini Crawler Cranes

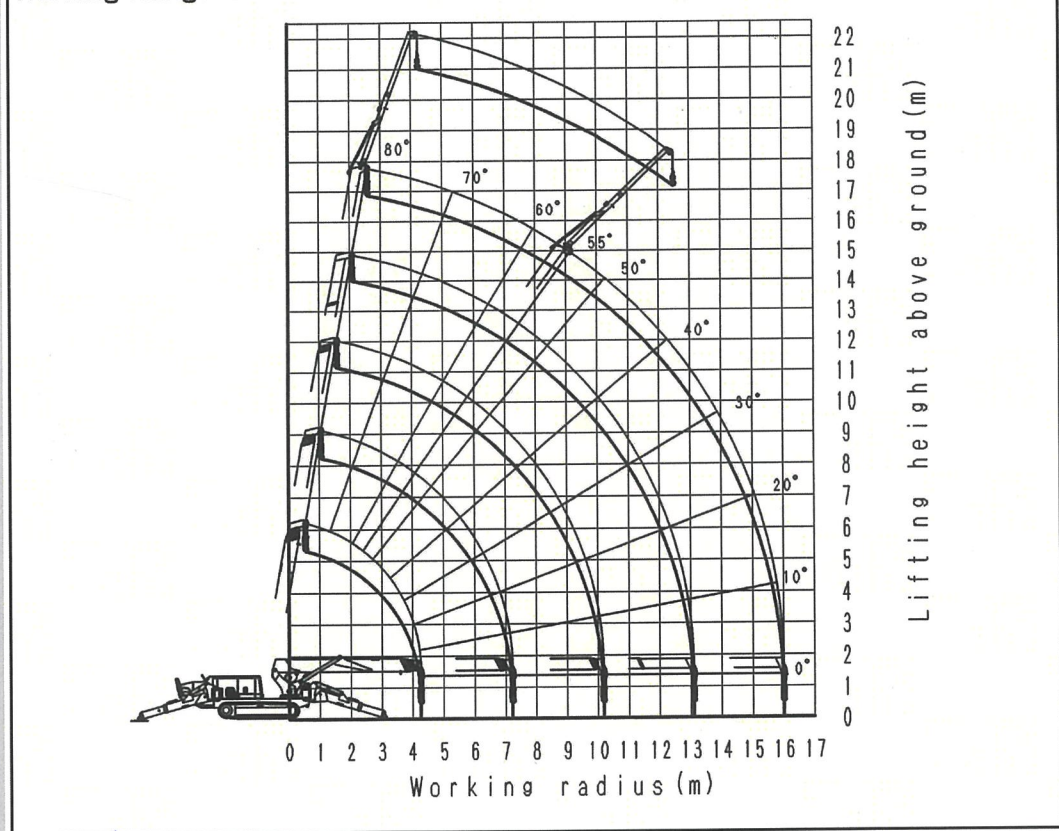
Little cranes with **BIG** ideas

Spec.No. MCC/405-02

MAEDA Mini Crawler Crane Series

MC405CRM(E) Fly jib

Working Range Chart



☆ The Working Range Chart does not take into account boom deflection under load.

Specification	
Model	MC405CRM(E) Fly Jib
Capacity	520 kg x 72 deg (single fall)
Max. Lifting Height	20.7 m
Max. Working Radius	12.5 m (@ 55 deg)
Fly Jib Length	4.5 m
Winch Speed	72 m / min
Fly Jib Spec	Stowed beside Boom

Total Rated Load	
Boom Angle (deg)	Total Rated Load (Kg)
76	520
72	520
69	420
66	320
63	250
60	220
55	170

For further details please contact Pace Cranes. Due to improvements, the specifications are subject to change without notice.

☆ including 20kg hook block weight.



P.A. Construction Equipment P/L
 5-7 Lorraine Street,
 Peakhurst, NSW 2210
 PO Box 377, Mortdale, NSW 2223
 Ph: 02 9533 5411
 Fx: 02 9533 5585
 email: sales@pacecranes.com.au
 www.pacecranes.com.au

